



# Hot & Heavy Collection

Mixte Solid and Mixte Stripe





Inspired by old-world Italian stone, Mixte offers an updated stone visual with a modern industrial twist. The two styles include delicately shaded solid colors with a softened, time-worn feeling, and a coordinating tile that mixes random stripes of the stone visual in its different colors. Mix and match solid and stripe tiles to create unique installations, even in shared spaces.



Mixte Stripe | 743 Medley; Mixte Solid | 747 Mingle, 757 Admix

Cover Image: Mixte Stripe | 956 Compound, 743 Medley; Mixte Solid | 747 Mingle, 757 Admix, 879 Unite, 768 Integrate









# Earth To Sky Collection

*Intercosmic, 859*

Inspired by aerial photography of raw, natural environments, the Earth to Sky carpet tile collection enables you to create subtle landscapes of tonal and textural shifts. Impressionist patterns in 24"x24" and 12"x36" tiles explore chromatic palettes highlighted with lustrous metallic yarns. The biophilic design of Earth to Sky brings the depths of the earth and farthest reaches of the atmosphere to your inspired spaces.



**Metagalactic**  
Available as 12"x36" tiles, Metagalactic features a metallic accent recalling mineral deposits in natural earthworks.



**Living World**  
Mimicking natural landscapes, Living World is available as a 24"x24" tile.



**Intercosmic**  
Adapted from the marble patterns that occur in many stones, Intercosmic is available in a 24"x24" tile.

- 9 colorways using metallic yarn accents for increased color depth and dimension
- Duracolor® Premium Nylon
- Backed with EcoFlex NXT
- Installs with FlexLok™ Tabs
- NSF/ANSI 140 Gold
- Declared Red List Free
- Minimum 56% Recycled Content





# Mixte

## Colorways

### Mixte Solid



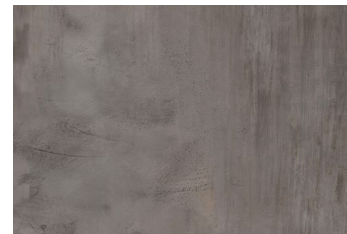
747 Mingle



757 Admix



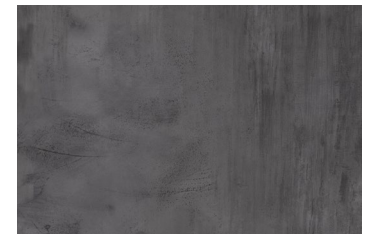
768 Integrate



879 Unite



888 Merge



989 Infuse

### Mixte Stripe



748 Medley



956 Compound

## Mixte Performance

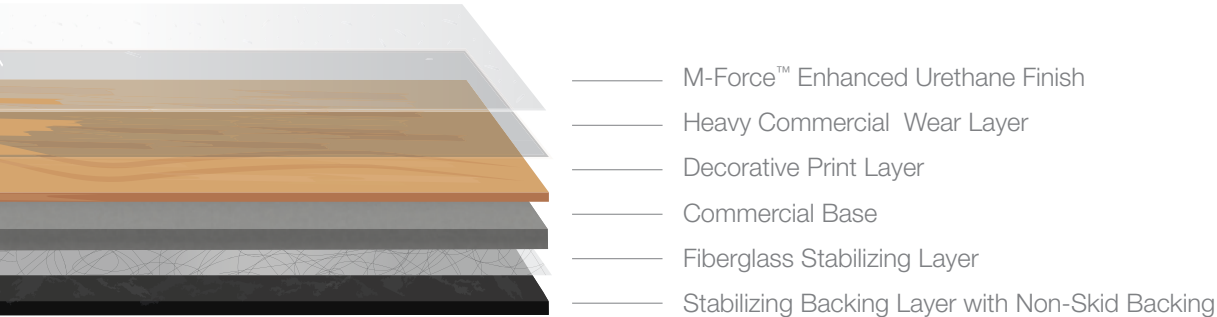
- Old world stonework visuals with randomly striped accent tiles create stunning and unique installations
- Oversized 36” x 36” tiles install over large areas quickly
- 5mm overall thickness and 20 mil commercial wear layer for superior durability
- M-Force™ Enhanced Urethane finish for stain and wear resistance
- Inherent acoustic properties, IIC rating of 57 with drop ceiling, without underlayment
- Twice as thick as traditional ERT for seamless transition with Mohawk Group carpet tiles
- Install over slabs up to 95% RH
- Non-skid backing keeps tiles in place
- 59% Recycled Content (37% pre-consumer and 22% post-consumer content)

## Loose Lay ERT Construction

**Construction:** Hot & Heavy loose lay enhanced resilient tile features a 20 mil commercial wear layer, M-Force™ Enhanced Urethane finish and polish-optional finish for versatile, cost-effective maintenance. The weight of the product and the unique non-skid backing texture allows for loose lay installation. Hot & Heavy carries a 10 year light commercial warranty.

### Loose Lay Selling Features

- Install with Mohawk adhesives and Mohawk AccuSound™ underlayment for improved sound absorption.



## Specifications

Collection	Hot & Heavy
Style Names	Style Name Mixte Solid and Mixte Stripe
Style Number	
Mixte Solid	C0090
Mixte Stripe	C0091
Brand	Mohawk Group – Hard Surface
Product Type	Loose Lay Enhanced Resilient Tile
DESIGN	
Overall Gauge	.20" (5mm)
Wear Layer	20 mil (0.5mm) Clic & Glue Down
Finish	M-Force™ Enhanced Urethane
Colors Available	
Mixte Solid	6
Mixte Stripe	2
Size	36"W x 36" L
Packaging	36 sq. ft. per carton / 25 cartons per pallet / 63.45 lbs per carton
Installation	Loose lay with perimeter glue
Required Adhesive	MS160 Spray Adhesive or M95.0 Resilient Flooring Adhesive
PERFORMANCE	
Construction	Commercial Grade Loose Lay Enhanced Resilient Tile
Classification	ASTM F1700 - Class III, Type A - Smooth, Type B - Embossed
Squareness	ASTM F2055 - Passes - ±0.10" max
Size and Tolerance	ASTM F2055 - Passes - ±0.16"/linear foot
Thickness	ASTM F386 - Passes - as specified ±0.005"
Flexibility	AASTM F137 - Passes - 1.0" Mandrel
Dimensional Stability	ASTM F2199 - Passes - 0.020"/linear foot max
Static Load Limit	ASTM F970 - Passes, modified at 1000 psi
Residual Indentation	ASTM F1914 - Passes - Average less than 8%, maximum single reading 10%
Slip Resistance	ASTM C1028 - Passes - Wet: ≥ 0.5
Resistance to Chemicals	ASTM F925 - Passes - No more than a slight change
Resistance to Light	ASTM F1515 - Passes - ΔE < 8
Resistance to Heat	ASTM F1514 - Passes - ΔE < 8
Critical Radiant Flux	ASTM E648 - Class 1 (>0.45 W/cm2)
Smoke Density	ASTM E662 Part A - Less than 450
IIC Rating	57 (over 6" concrete and drop ceiling)
SUSTAINABILITY	
Certification	FloorScore® Certified
Recycled Content	59% Recycled Content: 37% pre-consumer and 22% post-consumer content
SERVICE	
Warranty	Limited 10 Year Commercial Warranty

Glue Down